



# The **imc** Line

## IMC is Awarded **Lifestyle Center**



### The Promenade Shops at SAUCON VALLEY

- **Scheduled completion - Fall 2006**
- **600,000 square foot Lifestyle Center**
- **Open-air retail complex**
- **Upscale fashion, home furnishing, and restaurant tenants**
- **Conveniently located in the Lehigh Valley at the intersection of Interstate 78 and US 309**

With explosive development in Eastern Pennsylvania, Poag & McEwen Lifestyle Centers LLC and Stanbery Development LLC have chosen the Lehigh Valley to develop their latest Lifestyle Center. As the leader in Lifestyle complex developers, Poag & McEwen Lifestyle Centers LLC has selected ka Architects to design and IMC to build this unique and exciting retail marketplace.

IMC is proud to be voted Best Place to Work in the Philadelphia Region



# In the news

## Rick Reinhard becomes a Partner



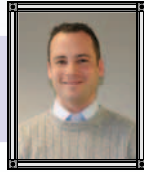
### Rick Reinhard Director of Preconstruction

IMC is pleased to announce Rick Reinhard, Director of Preconstruction, as the newest partner in the company. Rick has been with the firm for over 10 years in various capacities. Most recently, Rick played an instrumental role in IMC, securing a \$20M engagement constructing a major Lifestyle Center: The Promenade Shoppes at Saucon Valley.

### New Hires



**Bob Liberato**  
Assistant Project Manager



**Ed Jackowski**  
Project Manager



**Randy Atkinson**  
Project Manager

## Groundbreaking at Congregation Beth El



On December 4, 2005, IMC broke ground on the addition at Congregation Beth El Synagogue in Yardley, PA. This addition will include a sanctuary, a social hall, a lobby, an expanded kitchen, and several other improvements to the building. After hearing from Governor Ed Rendell, the groundbreaking ceremony began.

Pictured from left to right: Hon. Pete Stainthorpe (Chair of the Board of Supervisors, Lower Makefield), Jerry Bronstein, AIA (Contract Manager, IMC Construction), Ron Smith (Supervisor-Elect of Lower Makefield), Michael F. Rettig (Co President, Beth El), Randall C. Flager (Co President, Beth El), Hon. Joe Conti (State Senator), Michael Koretsky (Vice President, Beth El), Hon. Steve Santarsiero (Member of the Board of Supervisors, Lower Makefield).



Governor Ed Rendell



9 Old Lincoln Highway Suite 300  
Malvern, Pennsylvania 19355  
Phone: 610-889-3600  
Fax: 610-889-3606  
www.imcconstruction.com